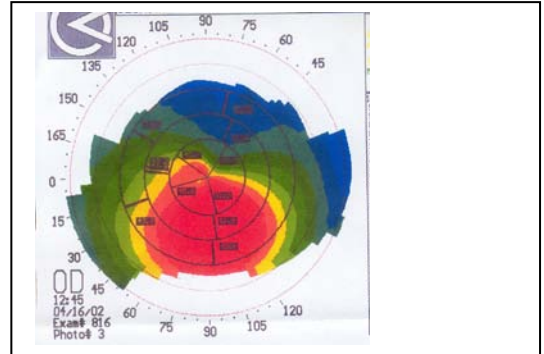


Menicon TCC6

Indication(s)

- Centered Keratoconus,
- Astigmatism...,
- Slight to moderate peripheral flattening,
- Daily wear,
- Recommended lens replacement < 2 years.



Design : sphero-spherical

- Peripheral curve(s): 4 spherical.

Fitting rules

Parameters*	r ₀ (mm)	Spherical power (D)	Diameter (mm)
Min / Max	6.50 to 9.00	-25.00 to +25.00	9.20 / 9.30 / 9.50 10.00 / 10.50
Steps	0.05	0.25	-

*(Other possibilities cf. technical support team)

- Choice of material : Menicon Z or EX.
- In first try : \varnothing_T (mm) = 9.20 / \varnothing_0 (mm) = 6.00.

Fitting advices

- You may base yourself on the topography and/or contact the technical support team.
- Cf. decision tree overleaf.

Lens Care

- **MeniCare Plus** : for daily care.
- **Progent** : once a week for intensive cleaning (protein remover) and disinfection.



CENTERED KERATOCONUS
CONE DECENTRATION < 2.5mm

Slight peripheral flattening (1)
EX-Z ϕ_T 8.80
or Z- α ϕ_T 8.80 or Z

Slight/moderate peripheral flattening (2)
Stade I
TCC6 ϕ 9.20

Moderate/important peripheral flattening (3)
Stade II or III
K3 ϕ_T 8.50

Important peripheral flattening (4)
Stade II or III
KRC

Central and/or peripheral contact +++
TCC6

Central and/or peripheral contact +++
Open the peripheral curves
or prefer K3

Central and/or peripheral contact +++
Open the peripheral curves
prefer KRC

Alternatively
S9 ϕ_T 9.00
or ϕ_T 9.20

Flattening: from corneal apex to the peripheral
(1) < 7D / 1.4 mm
(2) Between 7D and 10D / 1.4 mm and 2 mm
(3) Between 10D and 14D / 2 mm and 2.8 mm (4) > 14D / 2.8 mm