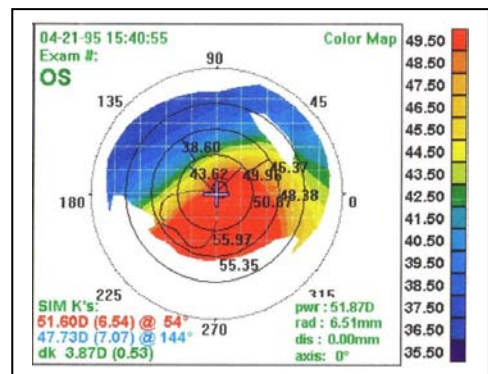


# Menicon S9

## Indication(s) :

- Decentered Keratoconus,
- Astigmatism...,
- Important flattening,
- Daily wear,
- Recommended lens replacement < 2 years.



## Design : sphero-spherical

- Peripheral curve(s): 3 spherical.

## Fitting rules

Parameters*	r <sub>0</sub> (mm)	Spherical power (D)	Diameter (mm)
Min / Max	6.50 to 9.00	-25.00 to +25.00	8.50 / 8.80 / 9.00 9.20 / 9.50
Steps	0.05	0.25	-

\*(Other possibilities cf. technical support team)

- Choice of material : Menicon Z or EX.
- In first try :  $\varnothing_T$  (mm) = **9.50** /  $\varnothing_0$  (mm) = **6.50**.

## Fitting advices

- You may base yourself on the topography and/or contact the technical support team.
- Cf. decision tree overleaf.

## Lens Care

- **MeniCare Plus** : for daily care.
- **Progent** : once a weekly for intensive cleaning (protein remover) and disinfection.



**DECENTERED KERATOCONUS**  
**CONE DECENTRATION < 2.5 mm**

Slight peripheral  
flattening (1)  
EX-Z  $\phi_T$  11.00  
Sphero-aspheric

Slight/moderate peripheral  
flattening (2)  
B4PM  $\phi_T$  11.00

Moderate/important  
peripheral flattening (3)  
B4P  $\phi_T$  10.00 or  $\phi_T$  10.50

Central and/or peripheral  
contact +++  
B4PM  $\phi_T$  11.00

Central and/or peripheral  
contact +++  
Open the peripheral curves  
or B4P  $\phi_T$  10.00 /  $\phi_T$  10.50

Central and/or peripheral  
contact +++  
Open the peripheral curves  
or S9  $\phi_T$  9.50 (4)

Flattening: from corneal apex to the peripheral  
(1) < 7D / 1.4 mm  
(2) Between 7D and 10D / 1.4 mm and 2 mm  
(3) Between 10D and 14D / 2 mm and 2.8 mm (4) > 14D / 2.8 mm